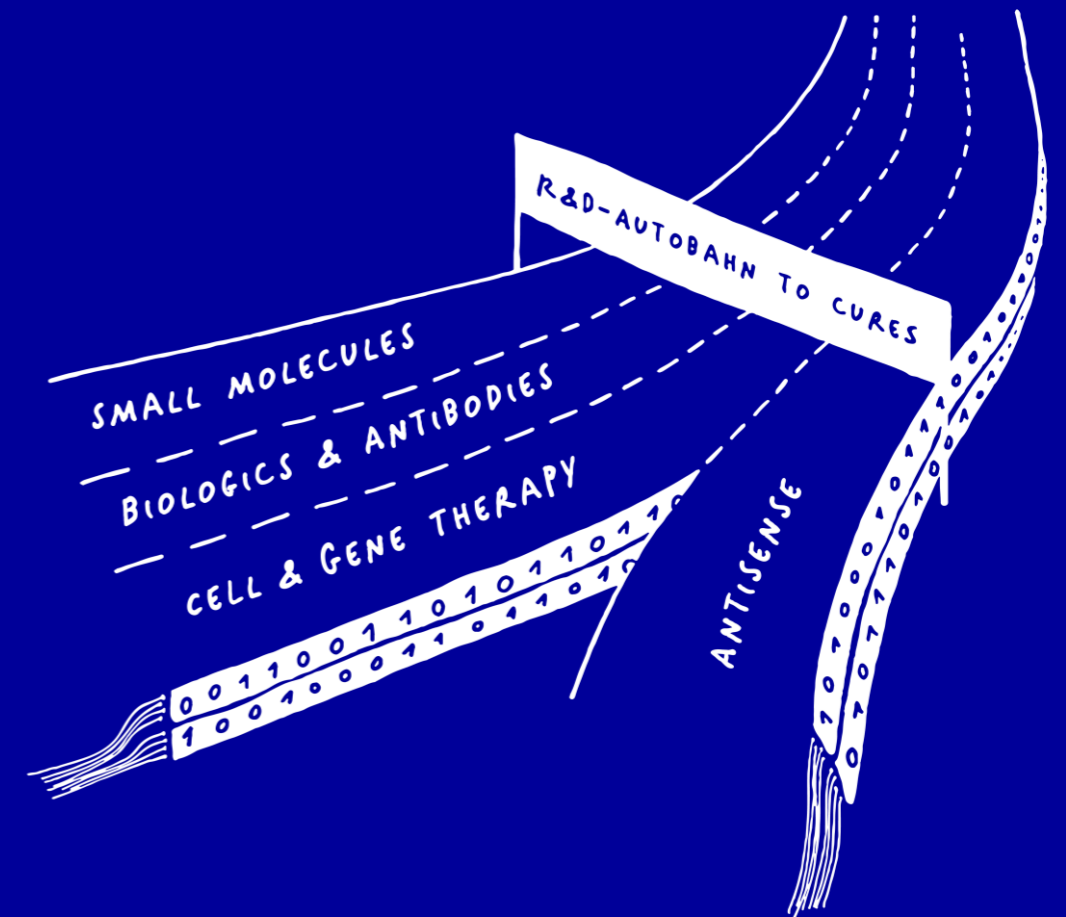


Evotec

The R&D Autobahn to Cures



Forward-looking statement

Information set forth in this presentation contains forward-looking statements, which involve a number of risks and uncertainties. The forward-looking statements contained herein represent the judgement of Evotec as of the date of this presentation. Such forward-looking statements are neither promises nor guarantees, but are subject to a variety of risks and uncertainties, many of which are beyond our control, and which could cause actual results to differ materially from those contemplated in these forward-looking statements. We expressly disclaim any obligation or undertaking to release publicly any updates or revisions to any such statements to reflect any change in our expectations or any change in events, conditions or circumstances on which any such statement is based.

Agenda

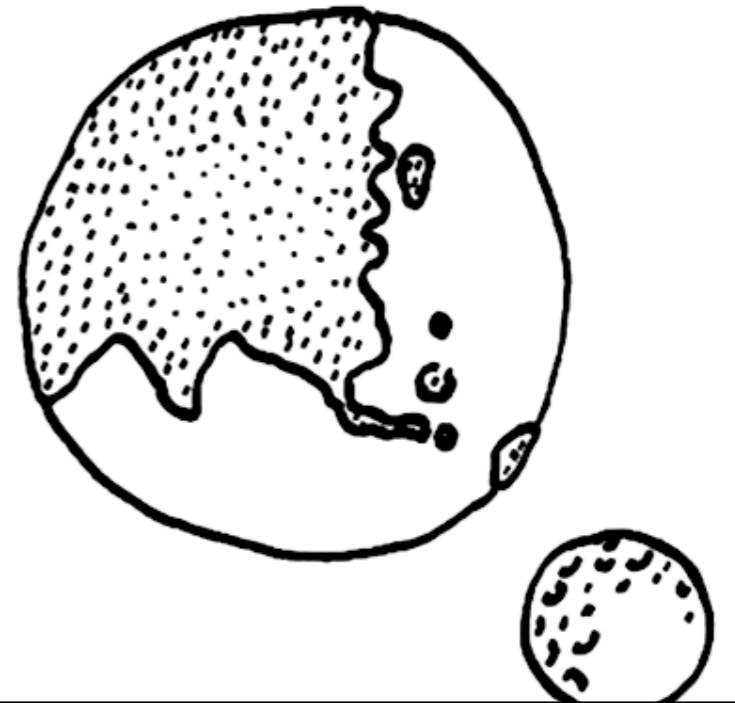
Unique business model

Data-driven precision multi-modality platforms

Co-owned pipeline building

From BRIDGES to operational VC

Financials, ESG & Outlook



Unique business model

Innovation Hub to capture sharing economy leverage via co-ownership



The Innovation Hub in R&D

Our long-term mission in drug discovery and development



Manfred Eigen
Nobel Prize 1967

We put drug discovery ideas and leading technologies across all modalities to action. We enable and accelerate the development of precision medicines together with our partners.

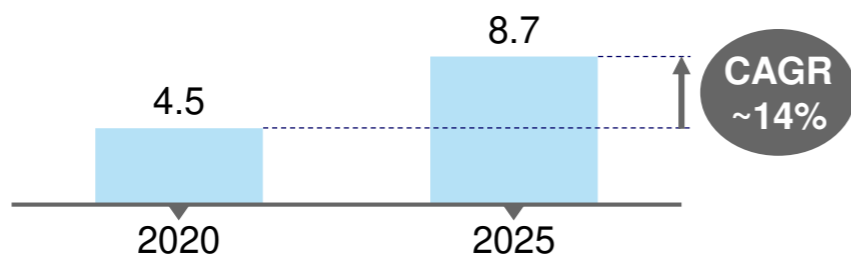
#RESEARCHNEVERSTOPS

Megatrends support vision of more precise and accessible drugs

Growth drivers for the future

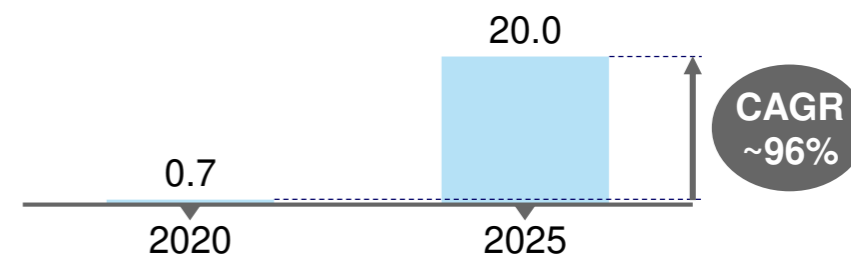
RNA analysis/transcriptomics market¹⁾

in US\$ bn



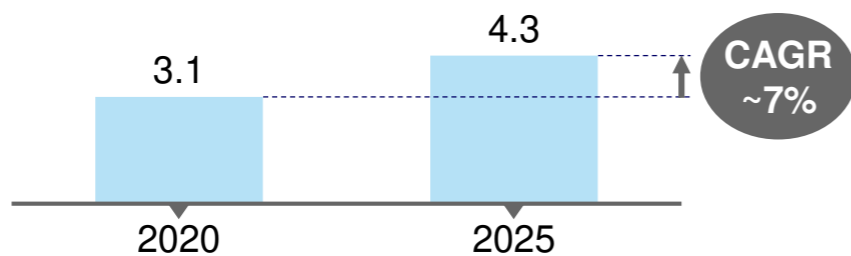
Global AI market in drug discovery²⁾

in US\$ bn



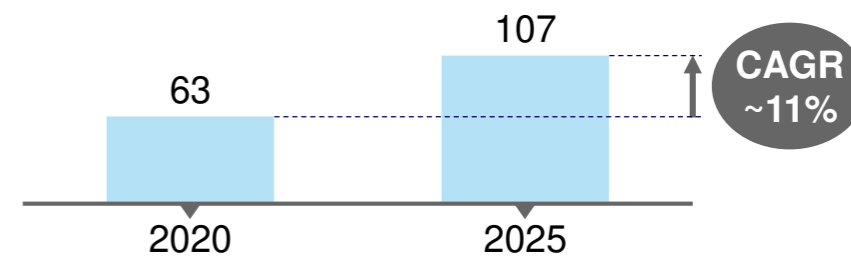
Global drug discovery external innovation market³⁾

in US\$ bn



Global precision medicine market⁴⁾

in US\$ bn



¹⁾ Reporterlink: RNA Analysis / Transcriptomics Market by Product, Technology, Application, End User, COVID-19 Impact – Global Forecast to 2025, Evotec estimates

²⁾ Deep Knowledge Analytics (DKA) titled 'Landscape of AI for Drug Discovery and Advanced R&D Q2 2019', Evotec estimates

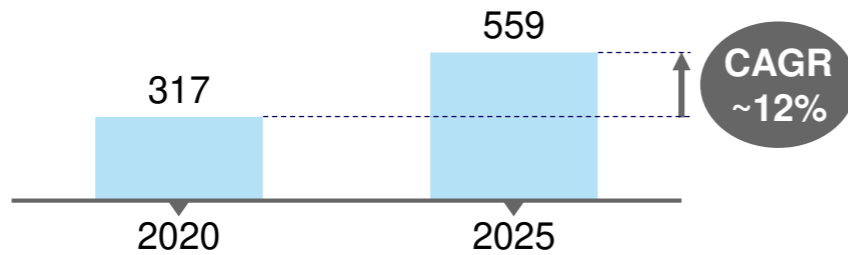
³⁾ <https://www.grandviewresearch.com/press-release/global-drug-discovery-outsourcing-market>, Evotec estimates

⁴⁾ <https://www.gminsights.com/> Feb 2020, Evotec estimates

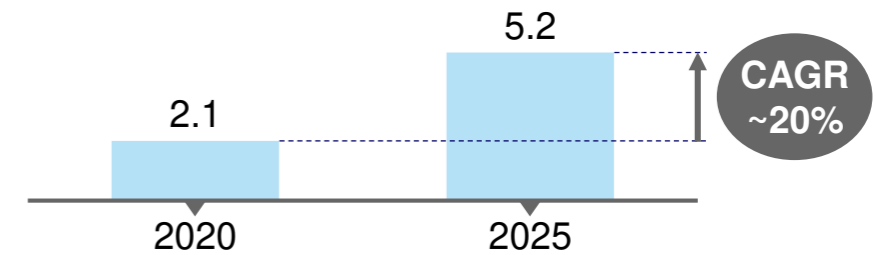
Multi-modality increasingly opens new doors to cures

Small molecules, biologics, cell and gene therapy

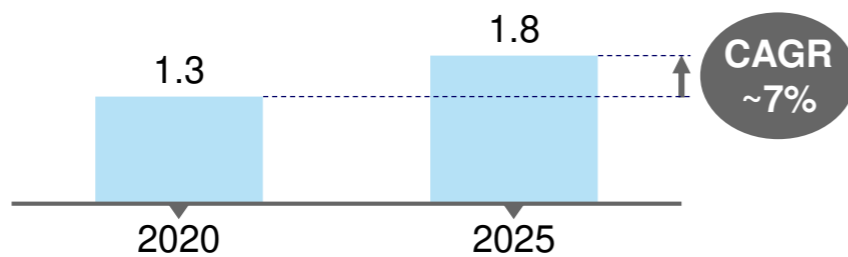
Global biologics market¹⁾
in US\$ bn



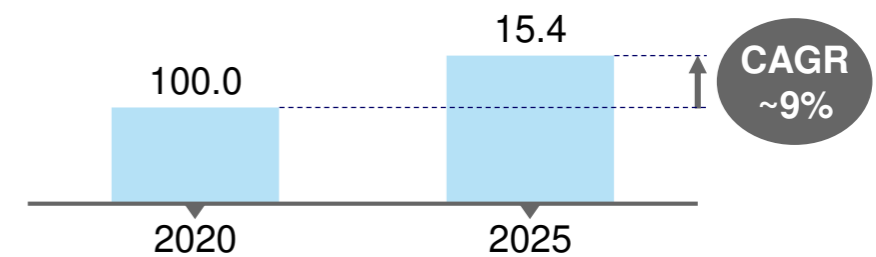
Global gene therapy market²⁾
in US\$ bn



Global antisense & RNAi therapeutic market³⁾
in US\$ bn



Global stem-cell therapy market⁴⁾
in US\$ bn



¹⁾ <https://www.reportsanddata.com/report-detail/biologics-market>, Evotec, estimates

²⁾ <https://www.grandviewresearch.com/industry-analysis/gene-therapy-market>, Evotec estimates

³⁾ <https://www.grandviewresearch.com/press-release/antisense-rnai-therapeutics-market>, Evotec estimates

⁴⁾ <https://www.grandviewresearch.com/industry-analysis/stem-cells-market>, Evotec estimates

Leadership in efficiency, data, science, multimodality and access

What we offer – Key growth drivers for high-impact and high-value business



R&D efficiency platforms¹⁾

From high quality stand-alone services to **EVOiR&D**



AI/ML & Precision medicine platforms

From molecular platforms via iPSCs to **EVOpanOmics & EVOpanHunter**



Just – Evotec Biologics¹⁾

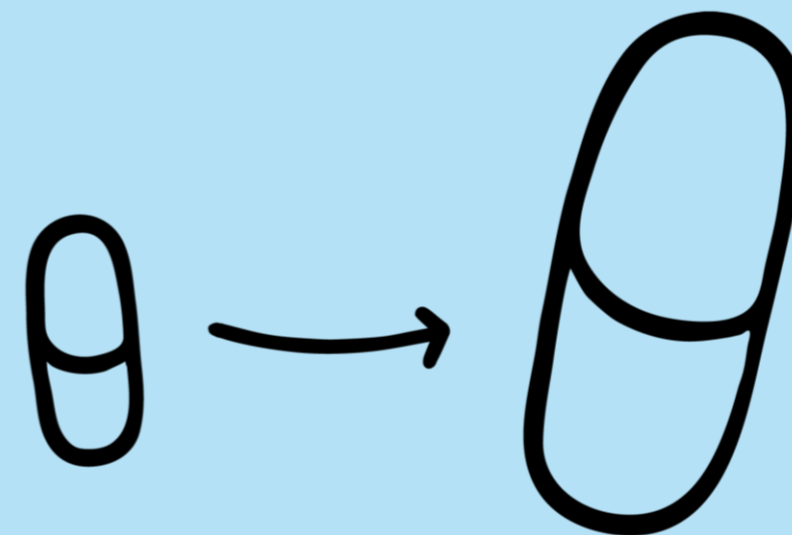
With **EVOaccess** from **J.HALSM** to **J.POD[®]**



Multimodality drug design

From small molecules & biologics to **EVOcells & EVOgenes**

EVOequity & EVOroyalty

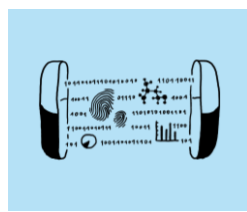


Clearly defined work packages allow increased access

Capabilities & expertise overview

Industry needs

Capabilities & expertise create multimodality & data-driven R&D Autobahn for growth



R&D efficiency platforms¹⁾



Target ID & validation



Hit identification



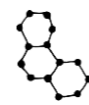
Sample management



DMPK & ADME-Tox



Research Informatics



Bio Reagents



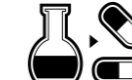
In vivo biology



In vivo Pharmacology



Biomarker discovery



Integrated CMC



Lead optimisation



INDiGO



AI/ML & Precision medicine platforms



EVOpanOmics



EVOpanHunter



iPSC Lighthouse



ScreenSeq™



ScreenPep™



J.HAL™
AI DESIGNED MAB LIBRARY



Just – Evotec Biologics¹⁾



J.DISCOVERY™
MOLECULE DISCOVERY



J.HAL™
AI DESIGNED MAB LIBRARY



J.MD™
MOLECULE DESIGN



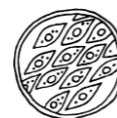
JP3®
PROCESS & PRODUCT DESIGN



J.POD®
MANUFACTURING DESIGN



Multimodality drug design



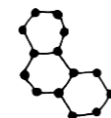
EVOcells



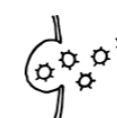
EVOgenes



Antibodies & Bifunctionals



Small molecules



Antisense¹⁾



Protein degradation



Exosomes



RNA

New technologies, more precision, higher speed and efficiency

Evotec today – 14 Sites & close to 4,000 employees



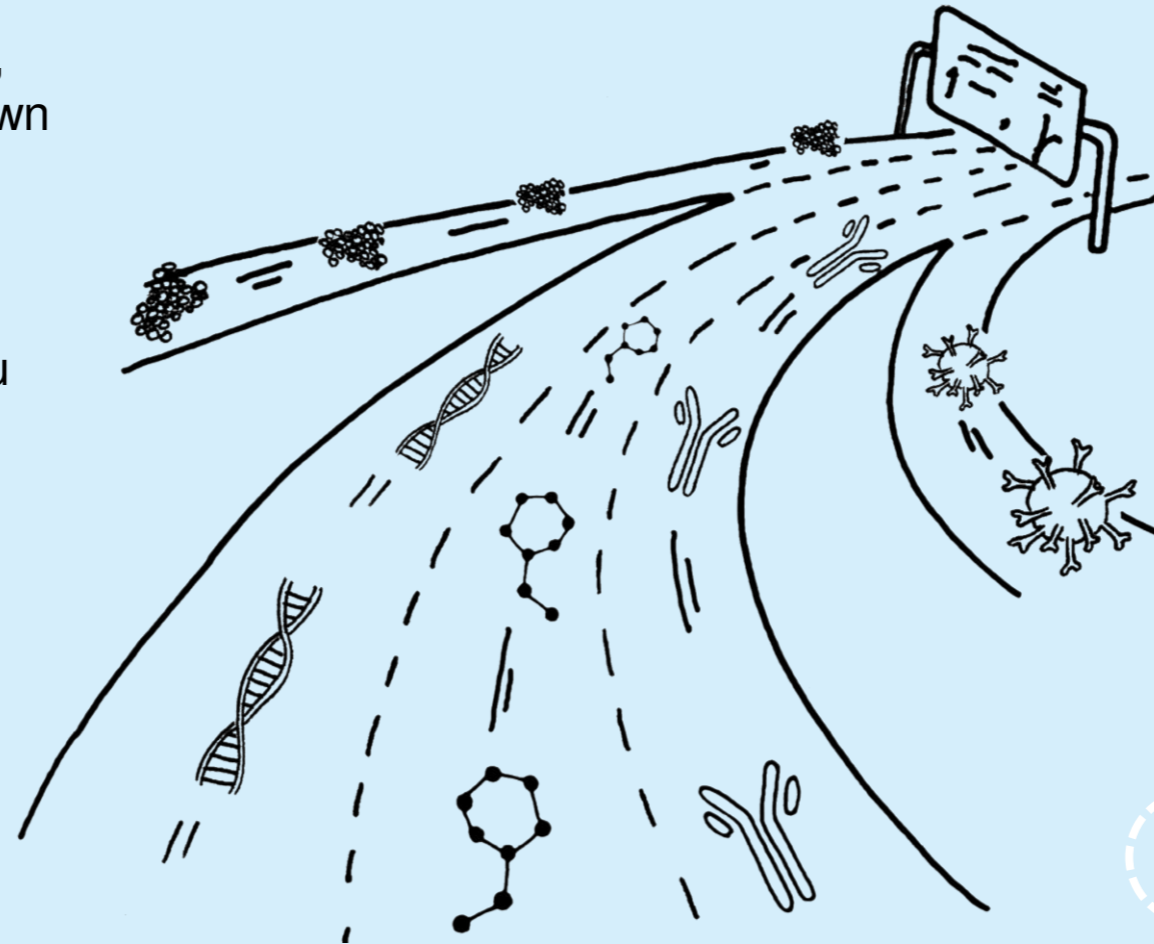
Princeton, Seattle,
Branford, Watertown
~400



Orth an der Donau
~30



Verona
~700



Hamburg (HQ),
Goettingen (Manfred
Eigen Campus)
Cologne, Munich,
~900



Abingdon (Dorothy
Crowfoot Hodgkin),
Alderley Park
~850



Lyon, Toulouse
(Campus Curie)
~800

“...just starting” to deliver significant growth and value potential

Development from 2015 ... to 2020

Revenues
in € m



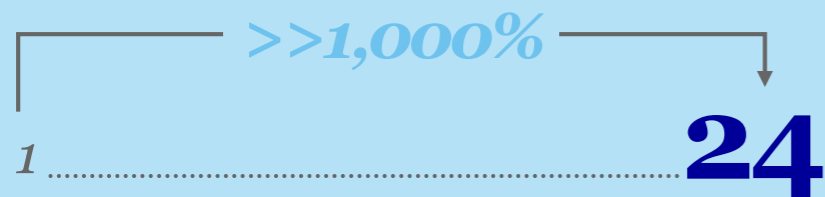
Co-owned programmes



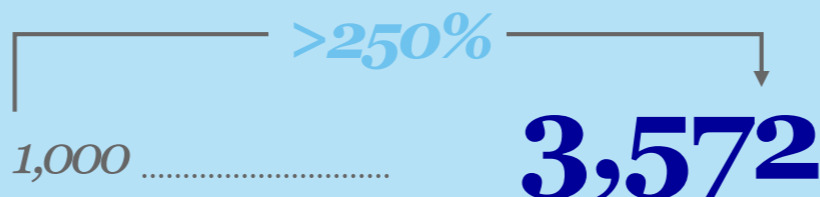
Adjusted Group EBITDA
in € m



Co-owned companies & BRIDGES



Top-class employees



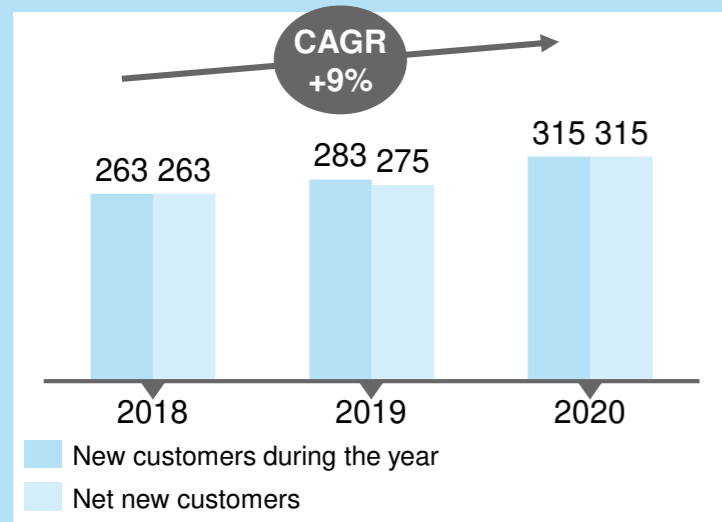
Unpartnered R&D projects



Offering resonates with partners

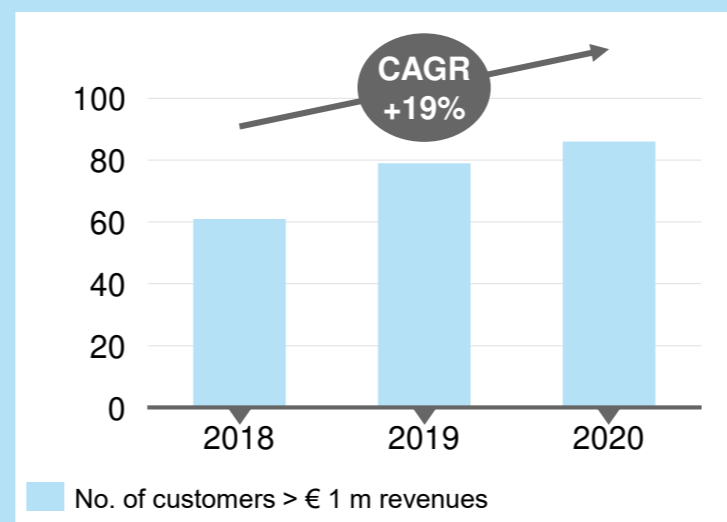
Attraction, Extension, Retention

Attraction



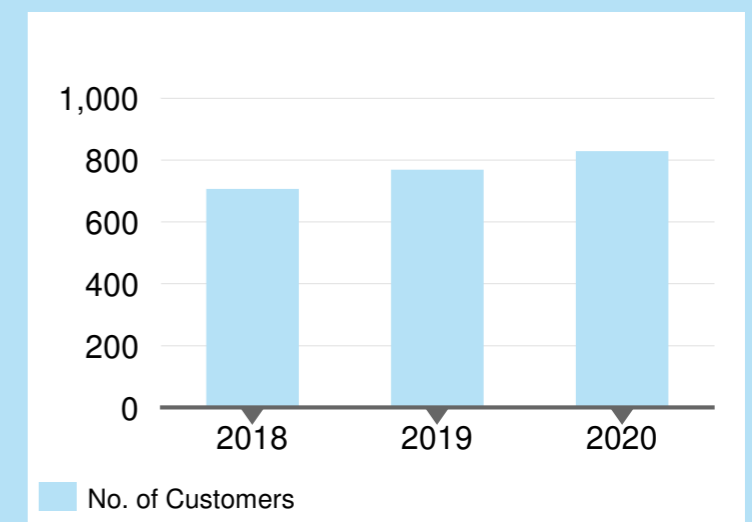
- Very robust demand for shared drug discovery & development
- Integrated offering translates in market share gains

Extension



- Integrated drug discover & development offering yields increasing “share of wallet”
- Faster and better results versus in-house infrastructures

Structural Retention ≥90%



- KPI to measure satisfaction
- Strong basis for double-digit growth

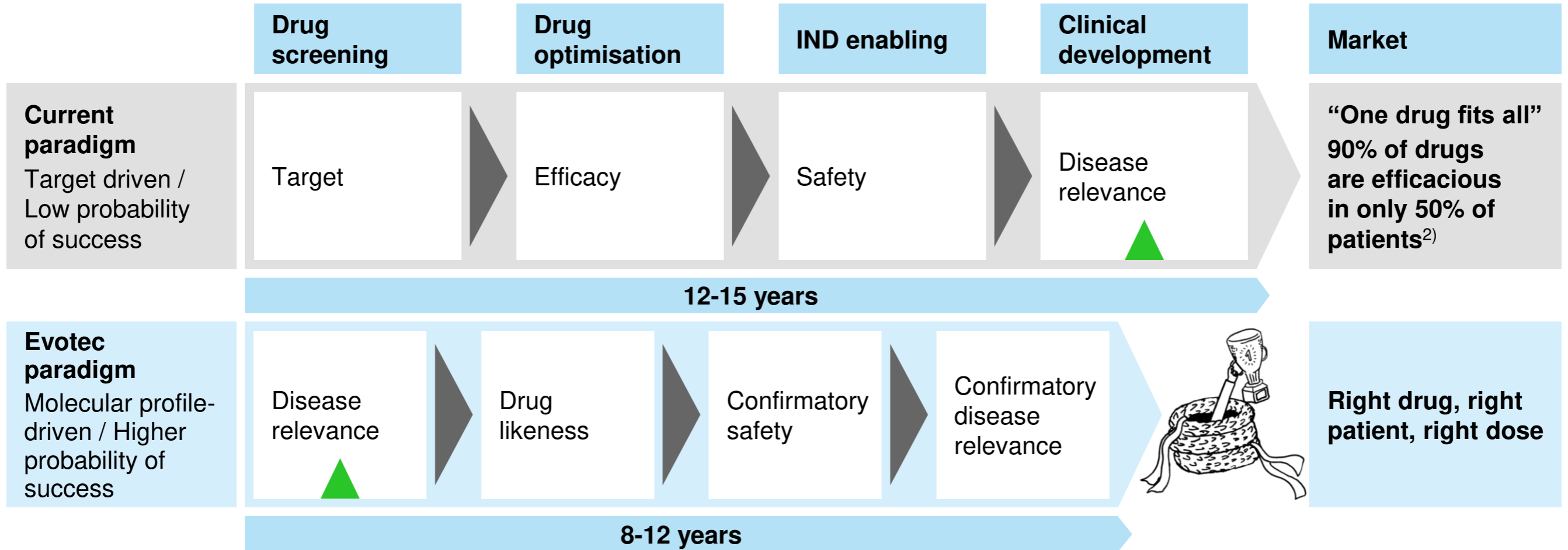
Data-driven precision platforms on all modalities

*“Omics” data in drug discovery is game
changing for precision medicine*



Early insight to disease relevance drives paradigm shift

Disease relevance is paramount to change clinical success rates¹⁾



High quality data at every stage in the value chain to de-risk projects, design modalities, create biomarkers, ...

1) 54% of Phase III trials fail due to inadequate efficacy: Fogel DB. Factors associated with clinical trials that fail and opportunities for improving the likelihood of success: A review. Contemp Clin Trials Commun. 2018;11:156-164. Published 2018 Aug 7. doi:10.1016/j.conctc.2018.08.001.

2) Regulatory Toxicology and Pharmacology; Volume 32, Issue 1, August 2000; Pages 56-67; Journal of Health Economics Volume 47, May 2016, Pages 20-33; Clinical development success rates for investigational drugs; Nature Biotechnology volume 32, pages40–51(2014); Evotec estimates

Precision medicine is our focus

Patient databases & models combined with **EVOpanHunter/EVOpanOmics** & Multi-modality

Molecular patient databases

- Re-defining health and disease via molecular disease profiles



Patient (iPSC) – derived disease models

- Focus on disease relevance throughout the process
- Comprehensive compound profiling



Diagnostics and biomarkers

- Precision diagnostics
- Precise tracking of disease progression



Genomics – Transcriptomics – Proteomics – Metabolomics

Industrialised data generation

EVOpanOmics

Data generation



Data science – Machine learning / Artificial intelligence – Bioinformatics

AI/ML driven data analytics

EVOpanHunter

Data analytics



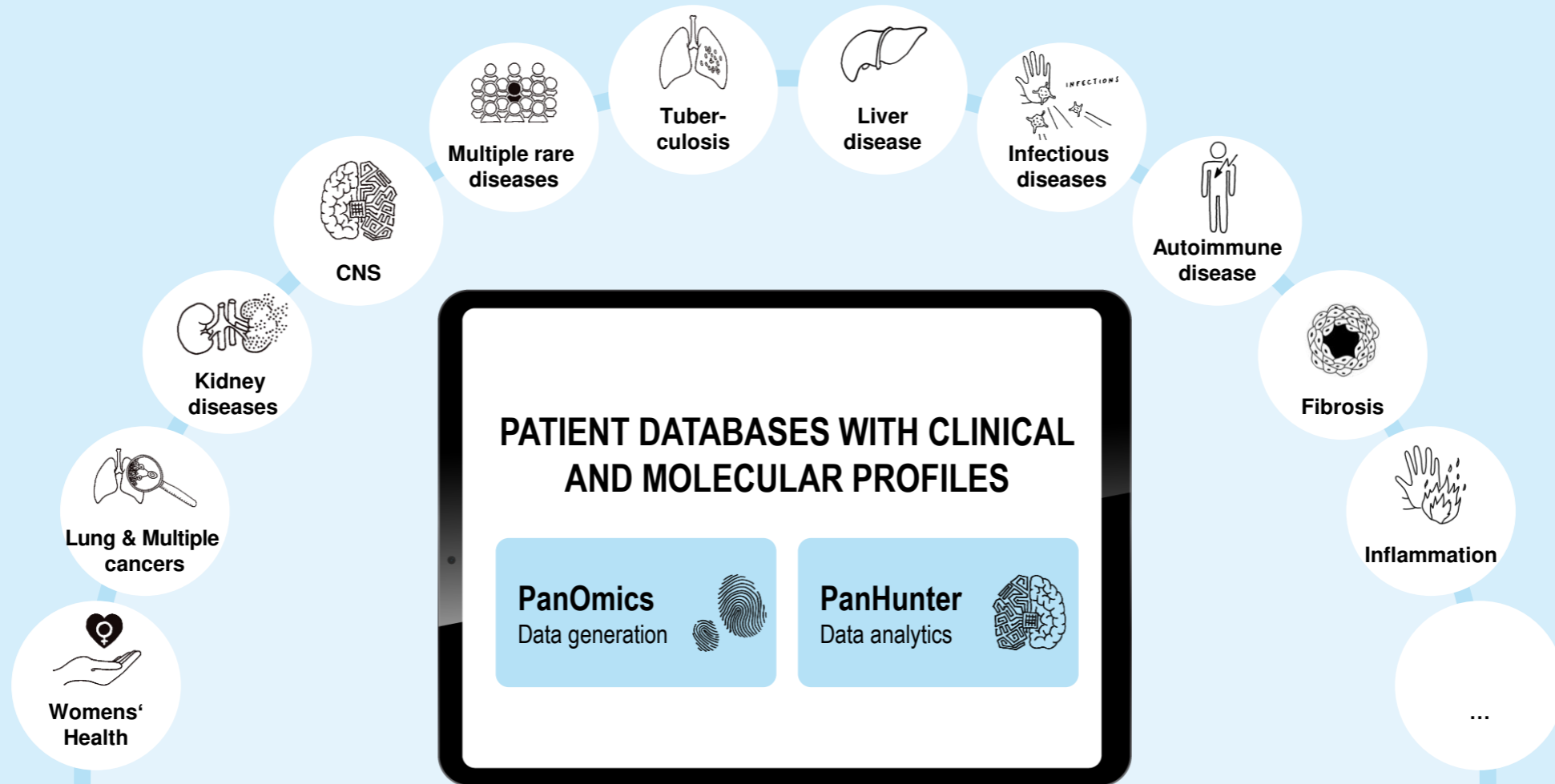
Small molecules – Antibodies – Bifunctionals – Cell therapy – Antisense – Gene therapy

Multi-modality



Molecular patient data bases are re-defining health and disease

The foundation of precision medicine



Molecular patient databases generate significant value

Example: Kidney disease data base (NURTuRE) delivered multiple high value partnerships

2016



- Upfront payment: € 6 m
- Research funding
- Milestones > € 300 m
- Tiered royalties

2019



NephThera



- Funded by Vifor: € 25 m
- 50% ownership on all projects

2020



novo nordisk



- Upfront payment: ND
- Research funding
- Milestones > € 150 m per product
- Tiered royalties

Q1 2021



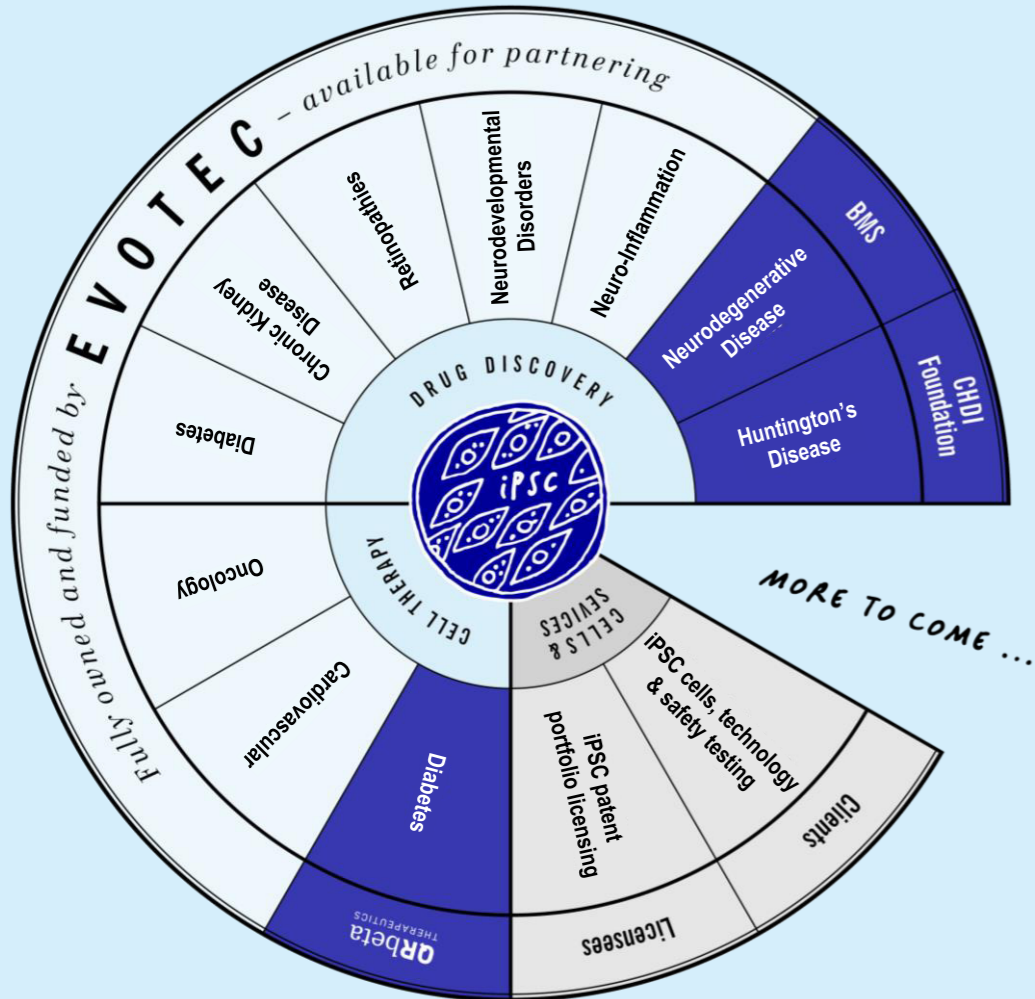
CHINOOK
THERAPEUTICS



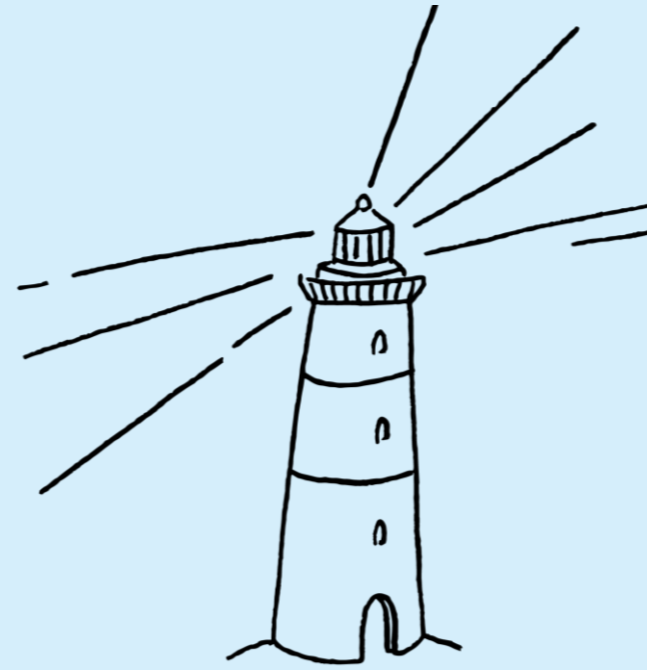
- Pipeline building initiated
- UF payment: ND
- Research funding
- MS as well as tiered royalties

Unparalleled iPSC platform delivers big portfolio of opportunities

iPSC platform



THE iPSC LIGHTHOUSE

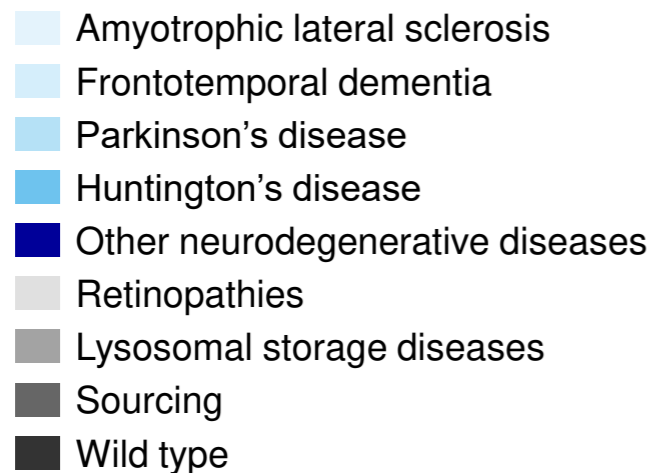


- Unique to select unbiased therapeutic modality for specific disease or target
- Perfect starting point for drug discovery and cell therapy – linked to technologies for disease understanding and modelling

>300 patient-derived validated iPSC lines

Broad panel of disease-specific genotypes for patient stratification in >15 disease models

iPSC bank



- High quality iPSC generation
 - Standardised patient consents
 - Standardised protocols
 - Highest QC standards
- Robust performance of iPSC lines in different disease models for HTS

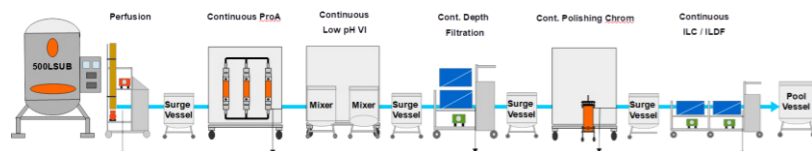
Systems approach creates continuous learning from data

Integrating molecular, process and manufacturing design delivers excellence

J.HALSM
AI DESIGNED mAb LIBRARY



in vivo AI generated and *in vivo* discovery



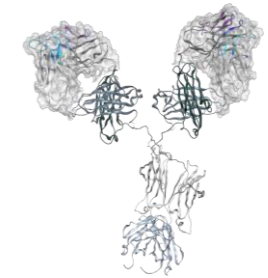
End-to-end continuous processing (E2E)

J.DISCOVERYTM
MOLECULE DISCOVERY

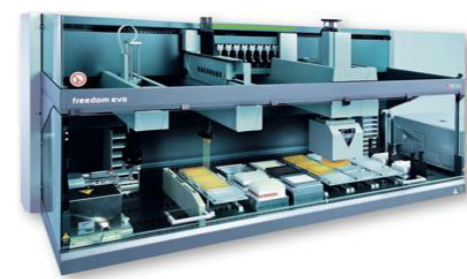
J.MDTM
MOLECULE DESIGN

J.POD[®]
MANUFACTURING DESIGN

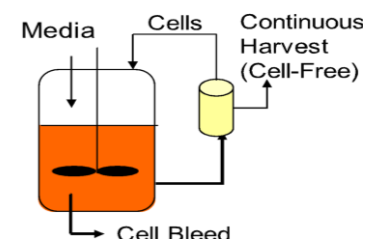
JP3[®]
PROCESS & PRODUCT DESIGN



Abacus optimisation to fit process development



Robotic high-throughput process development



Dynamic predictive process control

Machine learning (ML) and Artificial intelligence (AI) are maturing our integrated biologics platform (J.DESIGN)

The time is now for more Access to Biologics

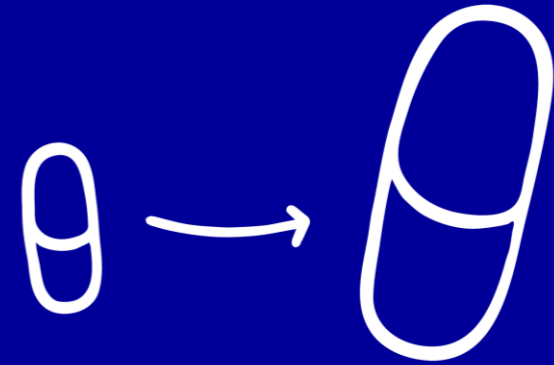
Rationale for J.POD[®] 2 in Toulouse, France¹⁾

- Global demand for flexible biologics capacity and for more affordable access to medicines is accelerating
- J.POD[®]1) US in Redmond is on track, demand is strong
- Business Strategy includes large proportion of capacity for co-owned pipeline
- Europe is second largest biologics market with strong desire and rational for security of supply
- Toulouse footprint creates operational efficiency and design for multi-modality biological treatments such as cell therapy adds further synergy with EVT strategic needs –
Up to € 50 m from the French government, the Occitanie region, Bpifrance, the Haute-Garonne prefecture as well as Toulouse Métropole



Co-owned pipeline building

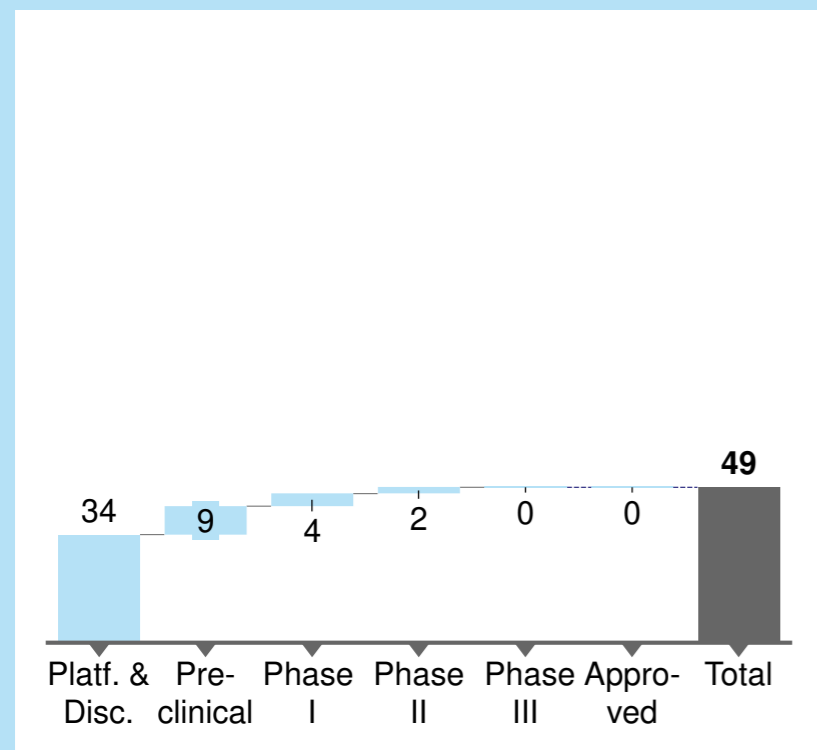
Milestones and royalties massively reward initial R&D investments



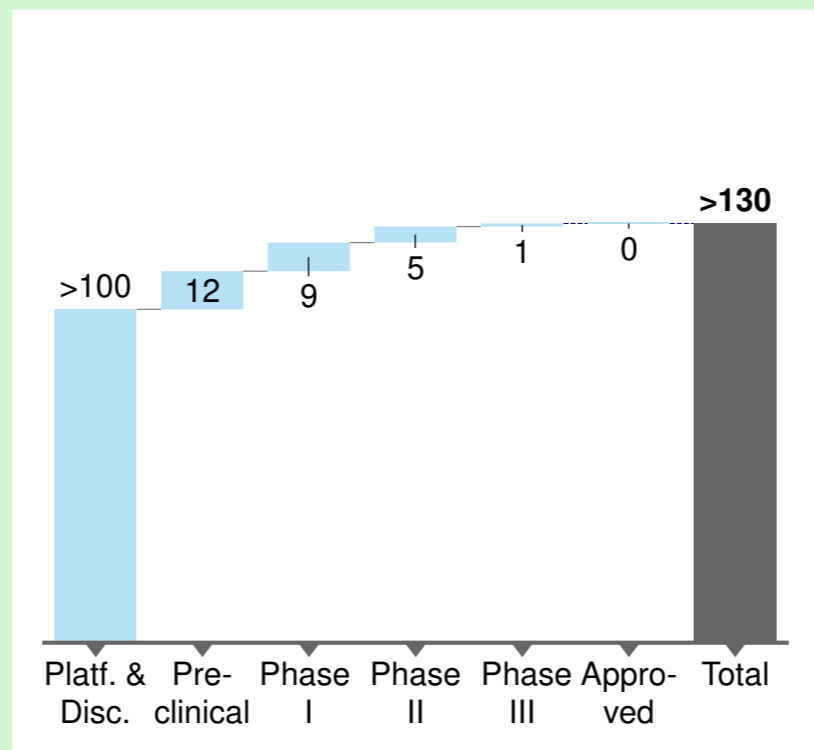
Building a massive co-owned clinical pipeline

EVT Innovate pipeline evolution 2015-2025 (e)

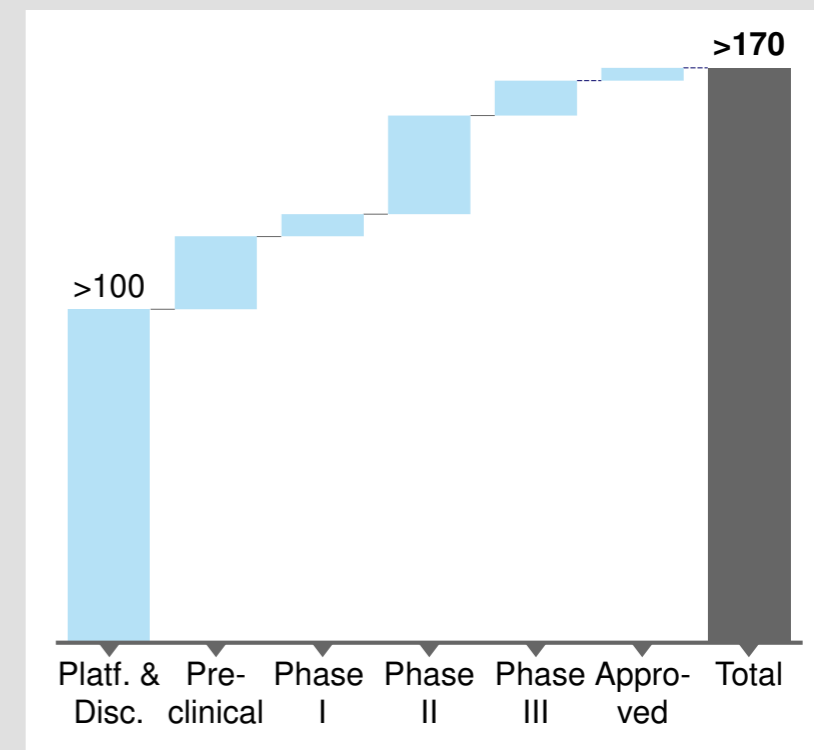
2015
of projects



2021¹⁾³⁾
of projects



2025(e)²⁾³⁾
anticipated # of projects



¹⁾ Does not include projects that were completely stopped, e.g. Diap277, EVT302

²⁾ Not risk adjusted

³⁾ Does not include EVT equity investments

“EVOroyalty” – Fully invested pipeline gaining visibility

Progress of drug candidates in advanced stages

Selected pipeline events

1. Phase IIb with Bayer in RCC (Eliapixant) ✓
2. Phase II with Bayer in Overactive bladder (Eliapixant) ✓
3. Phase II with Bayer in Endometriosis (Eliapixant) ✓
4. Phase II with Bayer in Neuropathic pain (Eliapixant) ✓
5. Phase II with BI in Oncology / Pain
6. Phase II with Bayer in Gynaecology (B1 antagonist)
7. Phase I in Chikungunya virus ✓
8. Phase I with BMS in CNS
9. Phase I with Exscientia in Oncology (A2a) ✓
10. Phase I with Sanofi in Immuno-oncology
11. Phase I with Kazia in Oncology (EVT801)
12. Phase I in HBV Cure
13. Multiple co-owned equity companies will progress in clinic (e.g. Topas, Forge, Carrick, Fibrocor, ...)

Molecule	Therapeutic Area/Indication	Partner	Discovery	Pre-clinical	Phase I	Phase II	Phase III
EVT201	Insomnia (GABA-A)	拜耳					
BAY-1817080	Chronic cough (P2X3)	拜耳					
BAY-1817080	Overactive bladder	拜耳					
BAY-1817080	Neuropathic pain	拜耳					
BAY-1817080	Endometriosis	拜耳					
CT7001	Oncology (CDK7)	Carrick					
CT7001	Oncology (CDK7)	Carrick					
EVT401	Immunology & Inflammation (P2X7)	拜耳					
BAYxxx	Women's health	拜耳					
BAY2328065	Gynaecology	拜耳					
BI 860585	Oncology (mTORC1/2)	拜耳					
TPM203	Pemphigus Vulgaris (not disclosed)	Topas Therapeutics					
DSP-1181	Obsessive-compulsive disorder (5-HT1A)	Exscientia					
CNTX 6016	Pain (CB2)	拜耳					
EVT894	Chikungunya (Antibody)	拜耳, SANOFI					
BAYxxx	Endometriosis (not disclosed)	拜耳					
EVT801	Oncology (VEGFR3)	SANOFI					
APN411	Oncology – Immunotherapy	SANOFI, APEIRON					
EXS21546	Oncology (various programmes)	Exscientia					
GLPGxxxx	Fibrosis (not disclosed)	礼来					
BAYxxxx	Nephrology (not disclosed)	拜耳					
QRB001	Metabolic – Diabetes (not disclosed)	拜耳					
BMSxxxx	Neurodegeneration (not disclosed)	拜耳, Bristol Myers Squibb					
EVT895	HBV	SANOFI					
EVTxxxx	CNS, Metabolic, Pain ...	>10 further programmes					
Various ND ¹⁾	Nephrology	Astellera, AstraZeneca, Bristol Myers Squibb, Celastix, etc.					
ND ¹⁾	Nephrology	拜耳, AstraZeneca, etc.					
ND ¹⁾	PCOS	Celastix					
INDY inhibitor	Metabolic	拜耳					
Various	Oncology	Bristol Myers Squibb, etc.					
ND ¹⁾	Oncology	The Medicines Company, etc.					
ND ¹⁾	Oncology – Colorectal cancer	拜耳, etc.					
ND ¹⁾	Oncology – DNA damage response	拜耳, etc.					
ND ¹⁾	Novel antibiotics	HELMHOLTZ, etc.					
ND ¹⁾	Novel antibiotics	拜耳, etc.					
ND ¹⁾	Anti-bacterial	拜耳, etc.					
Target PicV	Antiviral	拜耳, etc.					
Various	Anti-infectives	拜耳, etc.					
Various	All indications	拜耳, etc.					
ND ¹⁾	Dermatological diseases	拜耳, etc.					
ND ¹⁾	Facioscapulohumeral Dystrophy	facio					
Various	Immunology & Inflammation – Tissue fibrosis	拜耳, etc.					
Various	Fibrotic disease	Fibrocor Therap./ Galapagos					
Various ND ¹⁾	Immunology & Inflammation	拜耳, etc.					
ND ¹⁾	Inflammatory	拜耳, etc.					
ND ¹⁾	Cancer	拜耳, etc.					
ND ¹⁾	Novel broad-spectrum antibiotic	拜耳, etc.					
ND ¹⁾	Heart failure	拜耳, etc.					
Various	Internal: Oncology, CNS, Metabolic, Pain & Inflammation	>40 further programmes					

The iceberg of EVT Innovate product opportunities

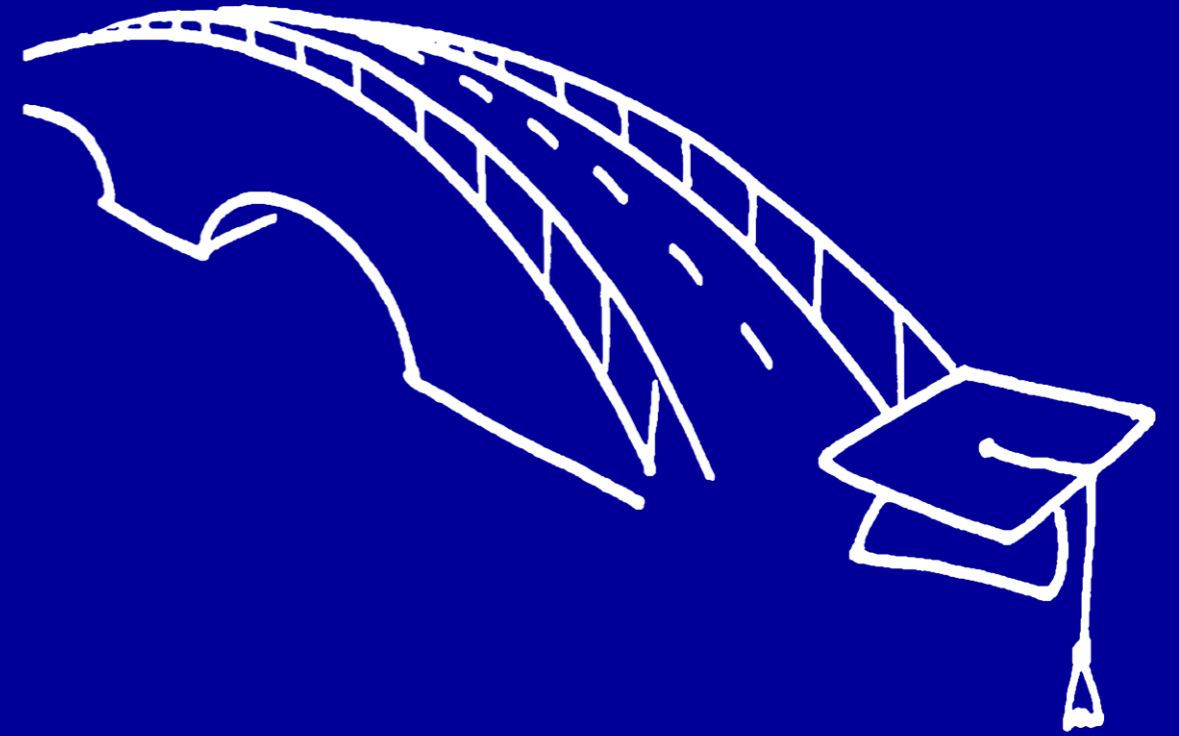
In total > 200 proprietary projects with big financial upside

		Neuroscience & Pain			Oncology				Metabolic Diseases			Inflammation & Immunology*			Virology	Anti-bacterial		Global Health		
Clinical	Ph3	Insomnia																		
	Ph2	CC - P2X3	NP- P2X3	OAB-P2X3	Breast cancer		Carrick Breast Cancer					Endo - P2X3								
	Ph1	ND	Pain									Endo	Endo					CHIK-V		
Preclinical		ALS																		
		ND				EVT 801			Exscientia ND 1	ND 7		QRbeta Encaps8	ND 8			Fibrocor IPF	Topas Pemphigus vulgaris	Topas Uveitis/Cholangitis	HBV	Noso-502
Discovery	ND 12																			
	ND 11																			
	ND 10																			
	ND 9																			
	ND 8																			
	ND 7																			
	ND 6																			
	ND 5																			
	ND 4																			
	ND 3																			
	ND 2																			
	ND 1																			

■ Partnered Pipeline
 ■ Unpartnered Pipeline
 ■ Equity Pipeline
 ■ Bridges Pipeline

From BRIDGES to operational VC









*Incubation and Investments
to accelerate co-ownership*












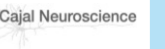

Portfolio of co-owned opportunities with operational synergies

Equity participations for co-owned pipeline

At equity investments (share ≥ 20% or significant influence)

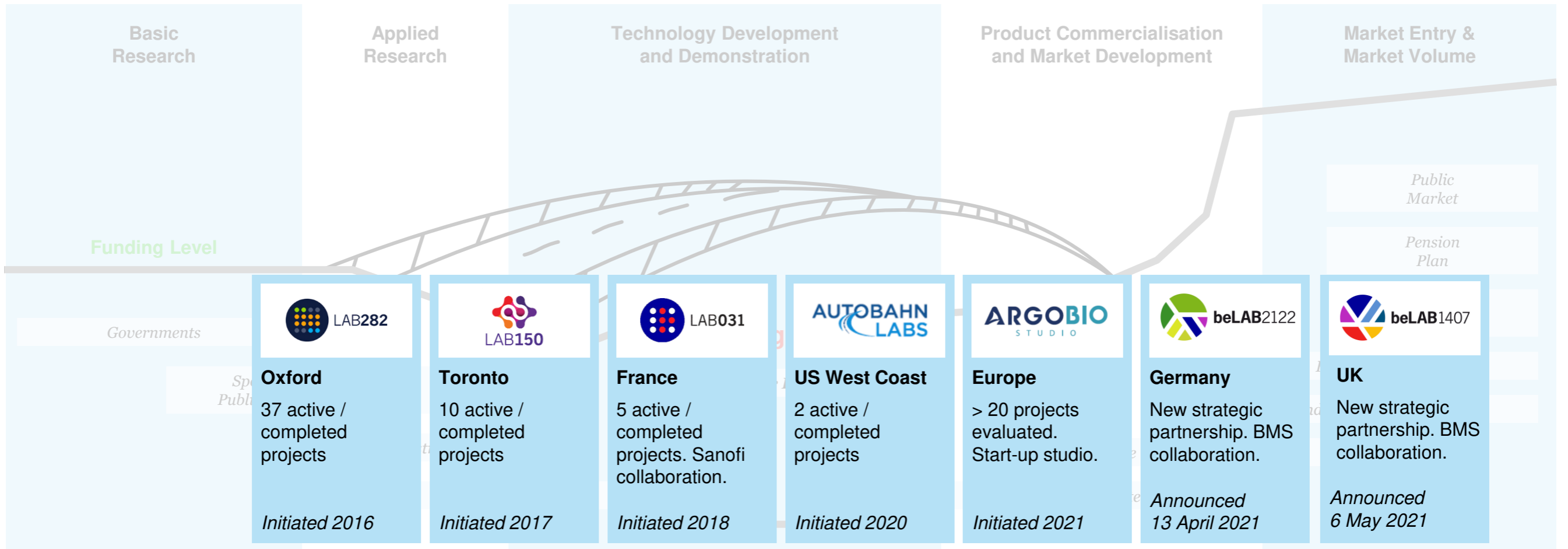
At equity investments (share ≥ 20% or significant influence)							Joint Venture
 <p>Equity participation Metabolic disorders</p> <p><i>Initiated 2016</i></p>	 <p>Spin-off Nanoparticle-based therapeutics</p> <p><i>Initiated 2016</i></p>	 <p>Equity participation FSHD</p> <p><i>Initiated 2017</i></p>	 <p>Spin-off DNA damage response</p> <p><i>Initiated 2019</i></p>	 <p>Equity participation Women's health</p> <p><i>Initiated 2019</i></p>	 <p>Equity participation Cross therapeutic areas</p> <p><i>Initiated 2019</i></p>	 <p>Equity participation and partnership Oncology</p> <p><i>Initiated in 2020</i></p>	 <p>Joint Venture with Vifor Pharma Nephrology</p> <p><i>Initiated 2019</i></p>

Minority Shareholdings (share < 20%)

 <p>Equity participation Innovative pathways in oncology</p> <p><i>Initiated 2016</i></p>	 <p>Equity participation AI for auto-mated drug design</p> <p><i>Initiated 2017</i></p>	 <p>Equity participation Targeting metalloenzymes</p> <p><i>Initiated 2017</i></p>	 <p>Equity participation Fibrosis partnership</p> <p><i>Initiated 2017</i></p>	 <p>Equity participation Inflammatory disease</p> <p><i>Initiated 2019</i></p>	 <p>Equity participation Oncology / Biologics</p> <p><i>Initiated 2019</i></p>	 <p>Equity participation Oncology</p> <p><i>Initiated 2019</i></p>	 <p>Spin-off (LAB282) Oncology</p> <p><i>Initiated 2020</i></p>	 <p>Equity participation Formulation nanotechnologies</p> <p><i>Initiated 2020</i></p>	 <p>Equity participation Failsafe cloaking for cell therapies</p> <p><i>Initiated 2020</i></p>	 <p>Equity participation Neuroscience</p> <p><i>Initiated 2020</i></p>	 <p>Equity participation Immuno-oncology</p> <p><i>Initiated 2021</i></p>
---	---	--	--	--	--	--	---	--	--	--	---

BRIDGEs to link academia with R&D Autobahn to Cures

Creating long-term optionality with efficient translation



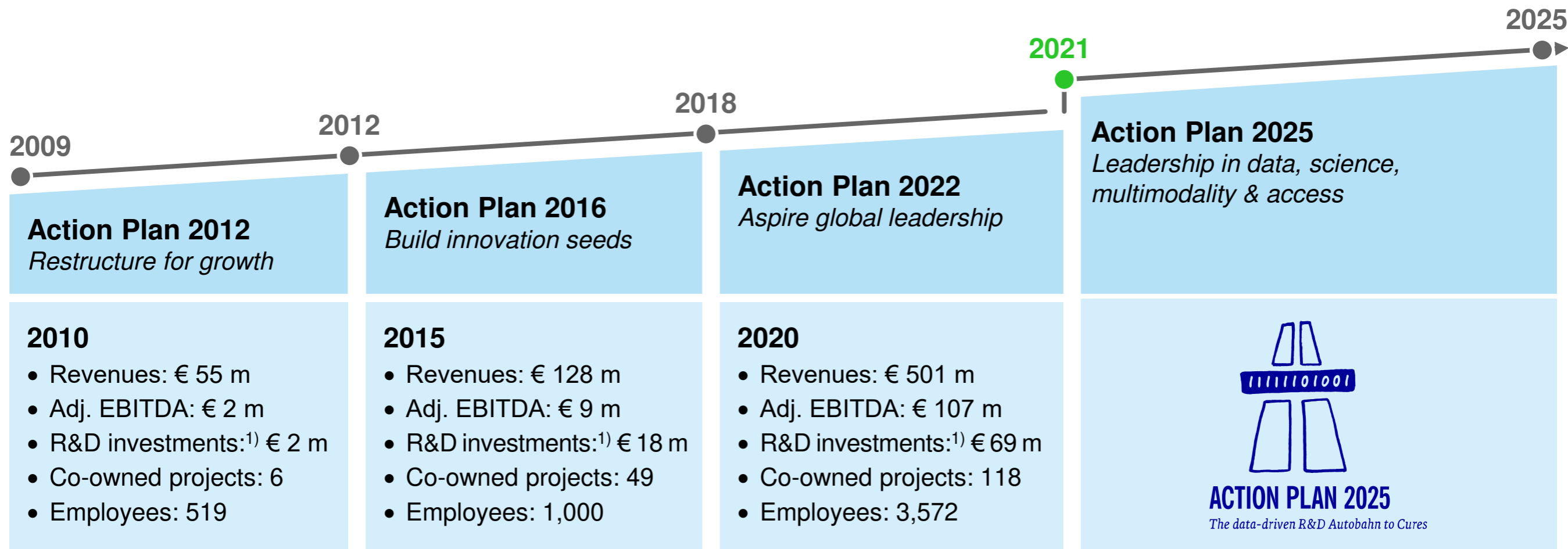
Financials, ESG & Outlook

*Sustainable growth business
building massive upside*



Action Plans deliver significant value

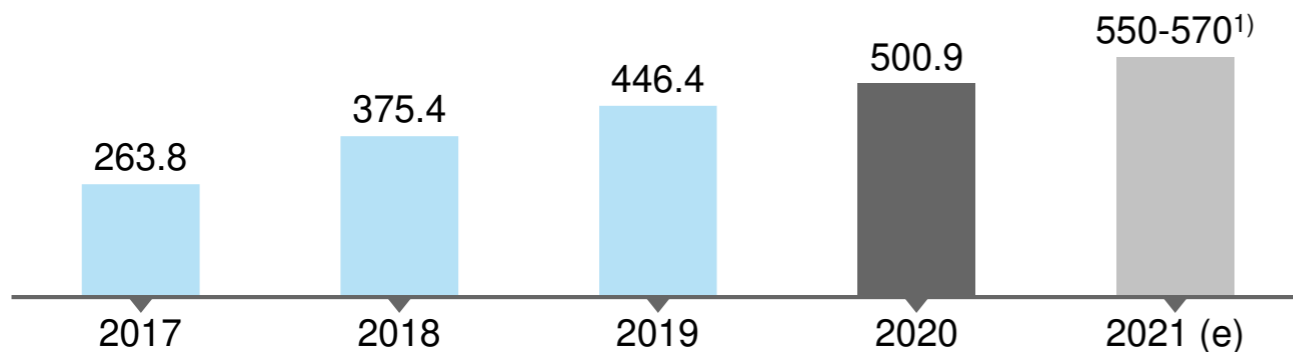
Action Plans in numbers - “... we are just at the beginning”



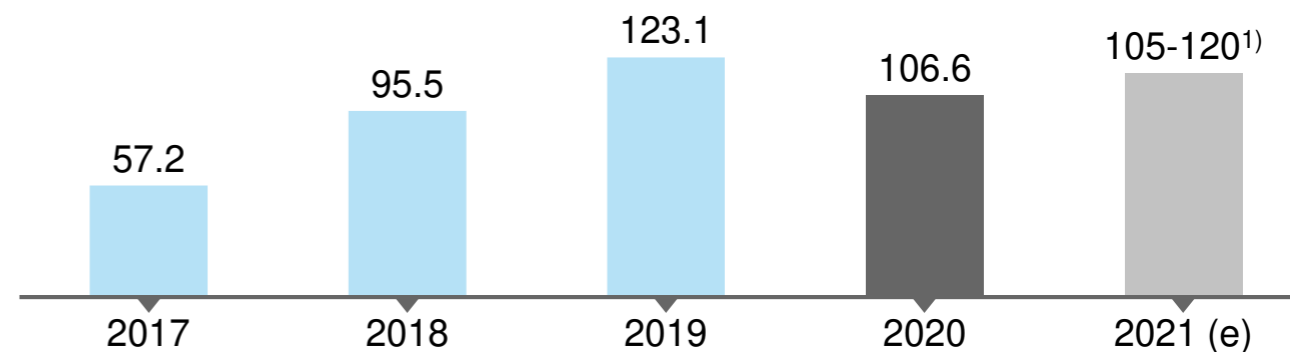
Strong growth while investing into long-term massive upside

“The data-driven R&D Autobahn to Cures” – In numbers

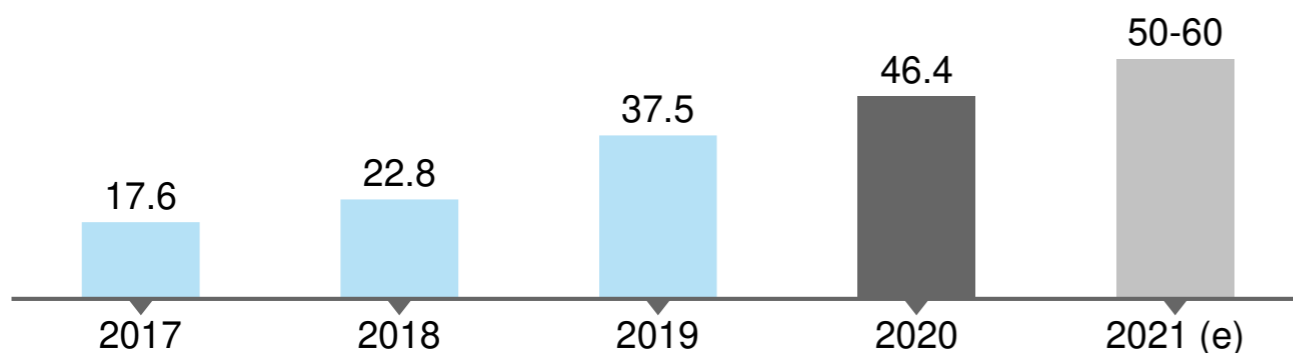
Strong revenue growth (in € m)



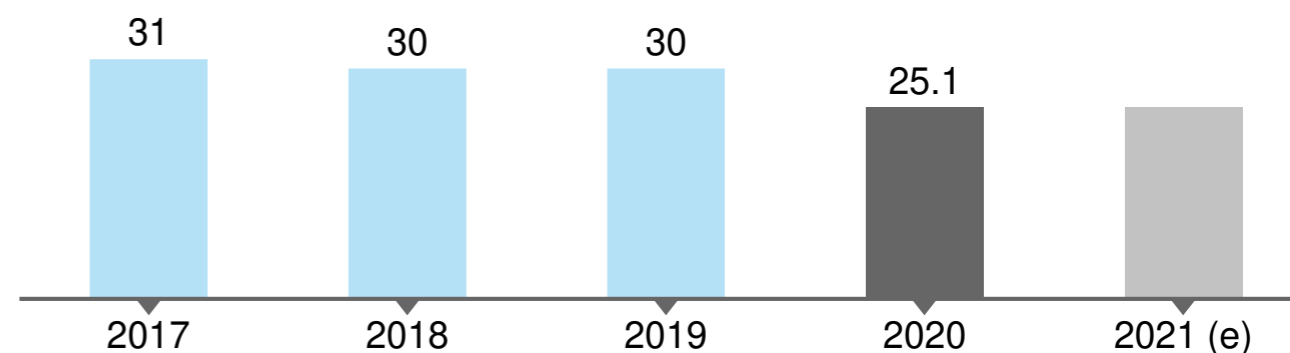
Adjusted Group EBITDA²⁾ (in € m)



High-value unpartnered R&D³⁾ (in € m)



Strong stable gross margins⁴⁾ (in %)



¹⁾ At constant fx rates (2020: \$/€ 1.15; €/GBP 1.13) Revenues: € 565-585 m; EBITDA: € 115-130 m; Please note that bar heights are only illustrative and not representing actual values

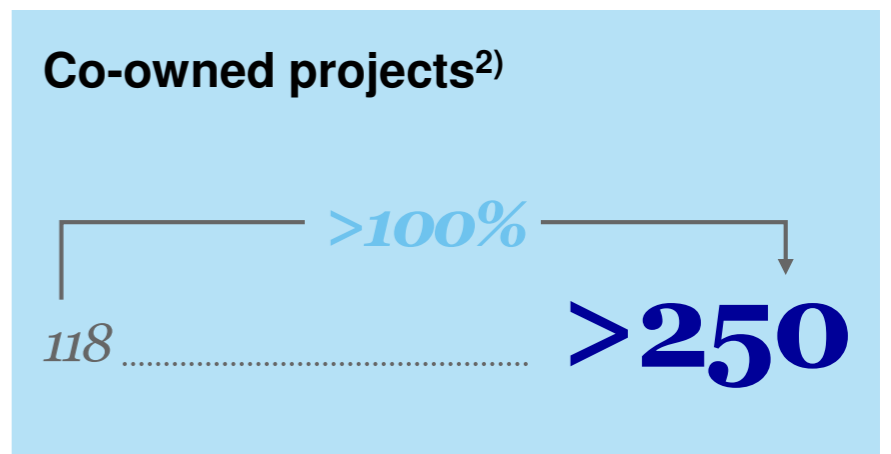
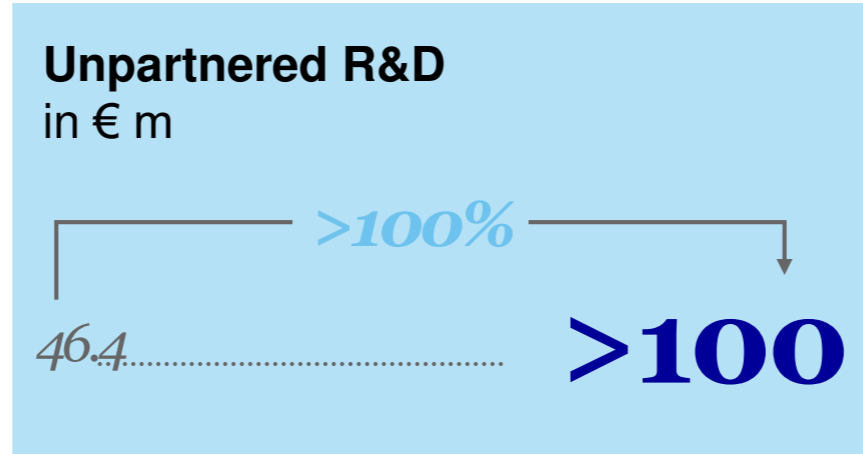
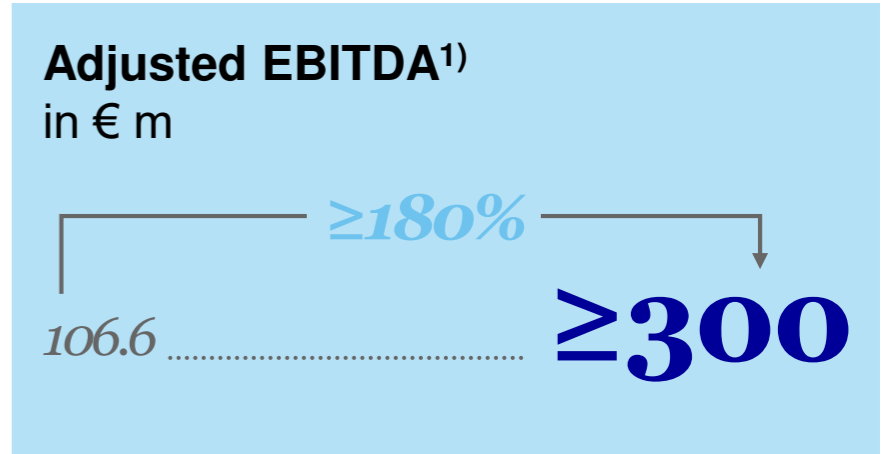
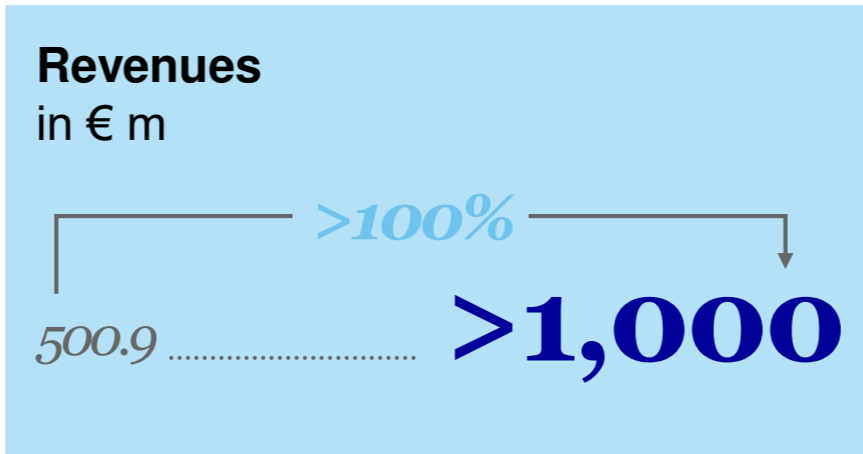
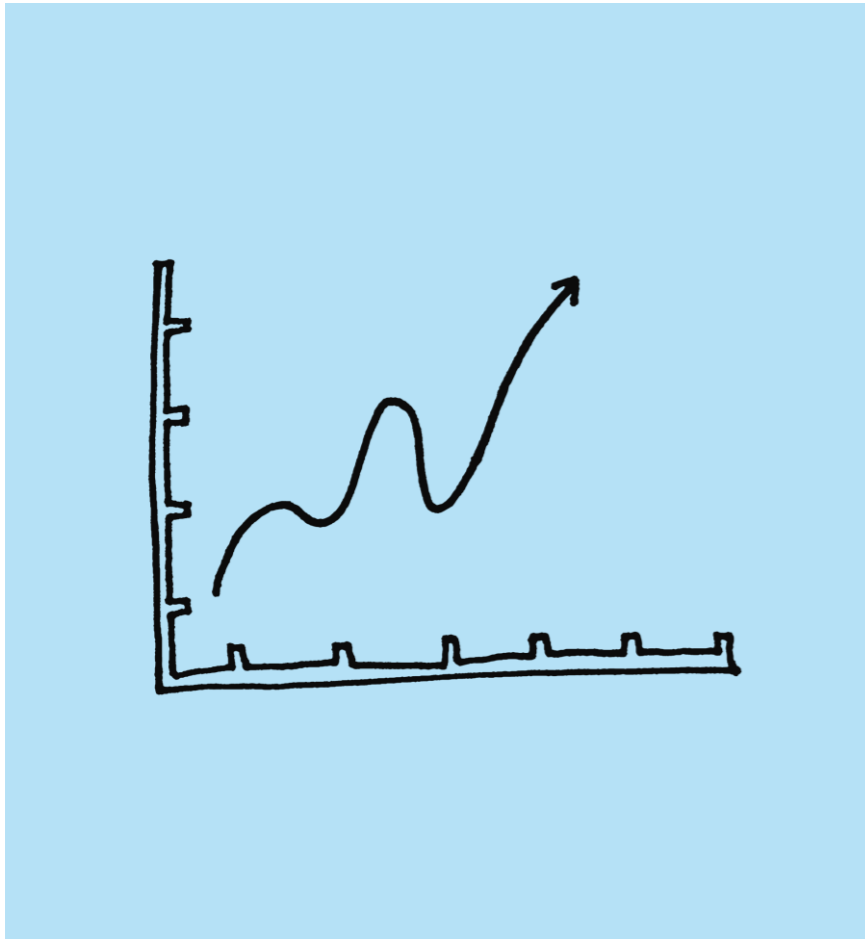
²⁾ Before contingent considerations, income from bargain purchase & excl. impairments on goodwill, other intangible assets & tangible assets as well as the total non-operating result

³⁾ Excluding expenses for ID-related expenses fully reimbursed by Sanofi under other operating income; total of R&D expenses in 2020 of € 63.9 m

⁴⁾ Gross margin in the future represents different business mix, considering amortisation of acquisitions, and may be volatile due to potential milestone or out-licensing payments; gross margin in 2017 restated for IFRS 15

Our mid-term aspirations at a glance

2020-2025e Key Performance Indicator goals

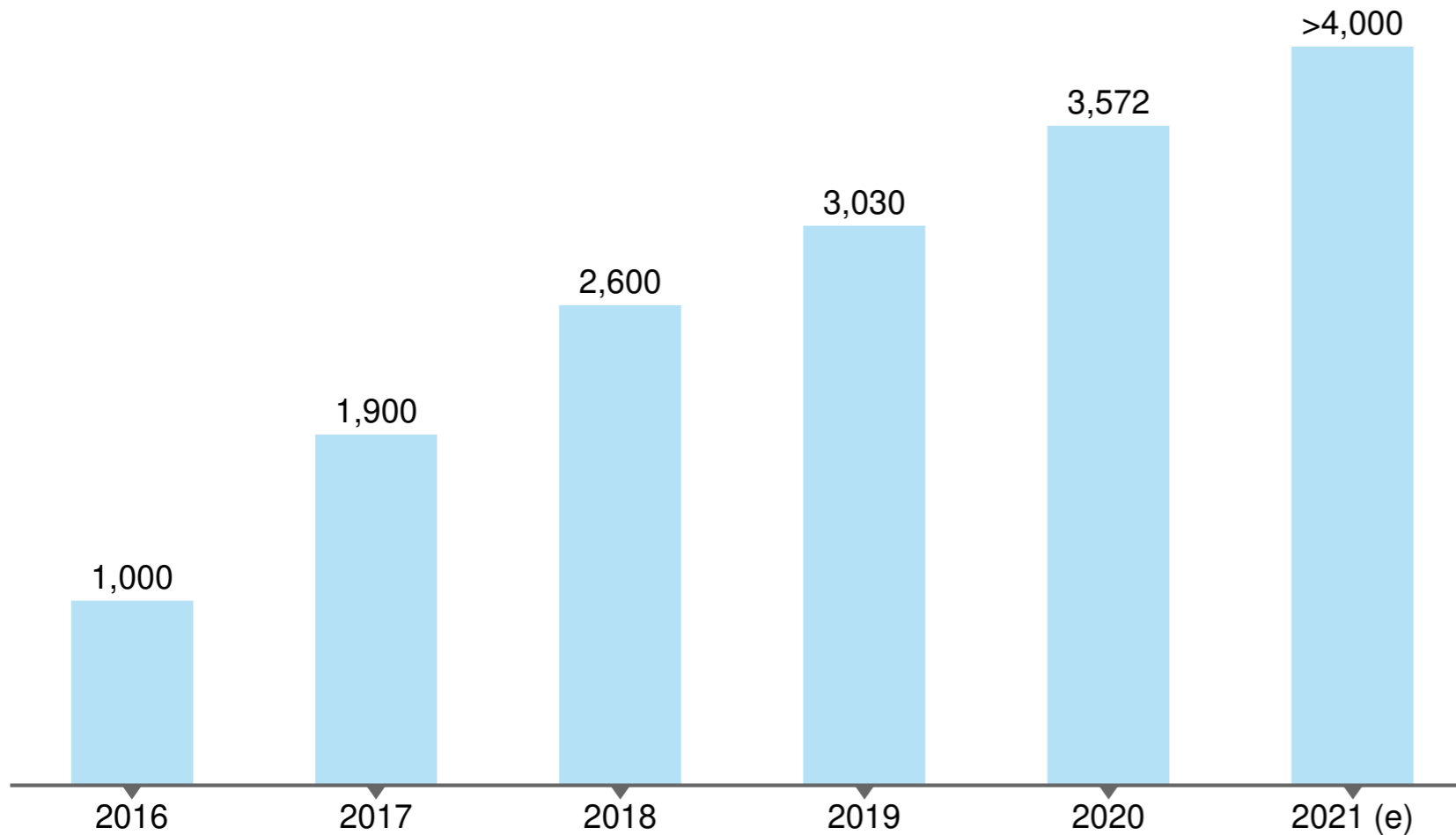


¹⁾ before significant royalties

²⁾ incl. Equity participations

>500 new “drivers” on the data-driven R&D Autobahn for Cures

Our people are our most important asset

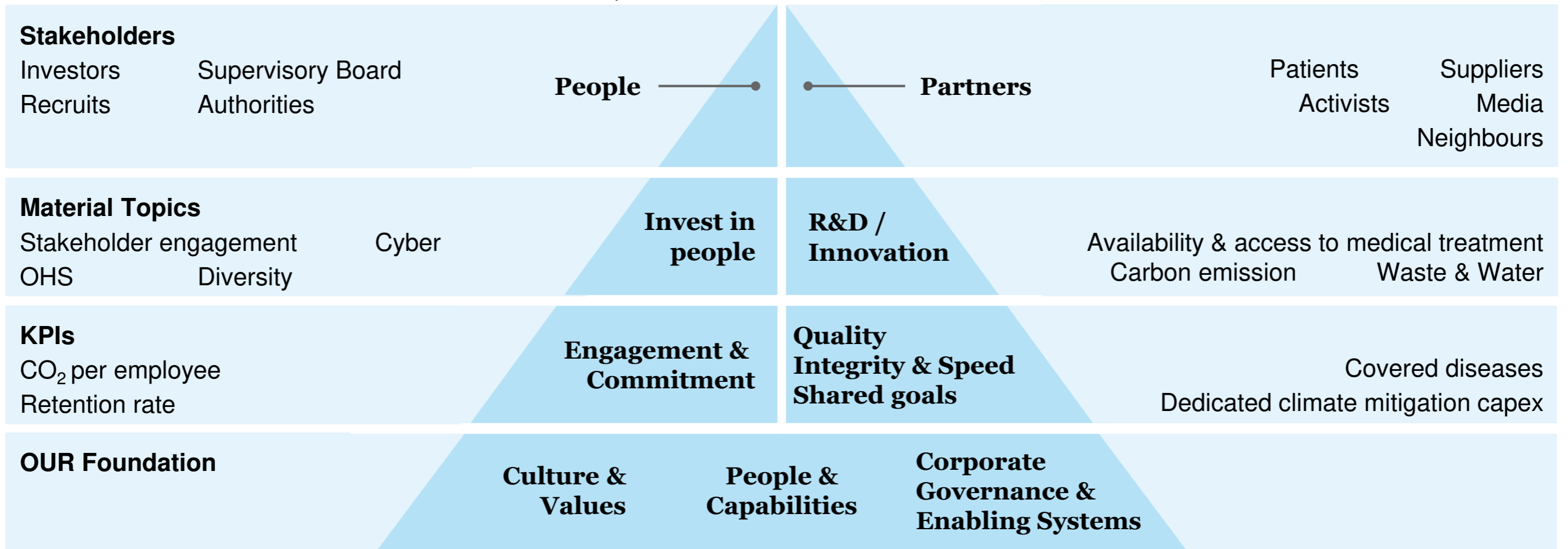


- >80% with at least one academic qualification; >30% PhDs
- >8 years drug discovery and development experience
- 54% female; >75 nationalities
- Fluctuation rate reduced from 10.5% in 2019 to 8% in 2020
- Share of permanent workforce: 91%
- >500 new talents planned 2021

Purpose defines a sustainable corporate strategy

Focus on most material topics in a holistic approach

#RESEARCHNEVERSTOPS



Going very long as ONE

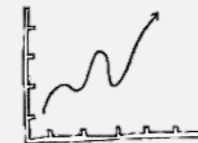
Sustainable thinking ensures long-term success

Purpose, People, Patients & Planet

- *#researchneverstops* – we are here for the very long run
- Focus on disease relevance puts individual patients in the centre of focus – and is therefore truly diverse
- Protecting and improving lives of our and future generations
- Ensuring greater justice for all our stakeholders
- Creating a corporate environment that makes people thrive and strengthens their commitment

Partners, Investors & Economic Success

- Shared values / Aligned targets with our partners / Improved competitiveness
- Saving resources = saving costs (for us and the society)
- Mitigating physical, transmission and reputational risks
- Eligibility for more attractive financing to foster sustainable growth
- Meeting regulatory requirements



We make our contribution to sustainable development goals

Evotec has a colourful and precise impact

The 17 UN Sustainable Development Goals are...

- adopted by UN Member States in 2015
- an urgent call for action by **all** countries in a global partnership
- Part of the 2030 Agenda for Sustainable Development

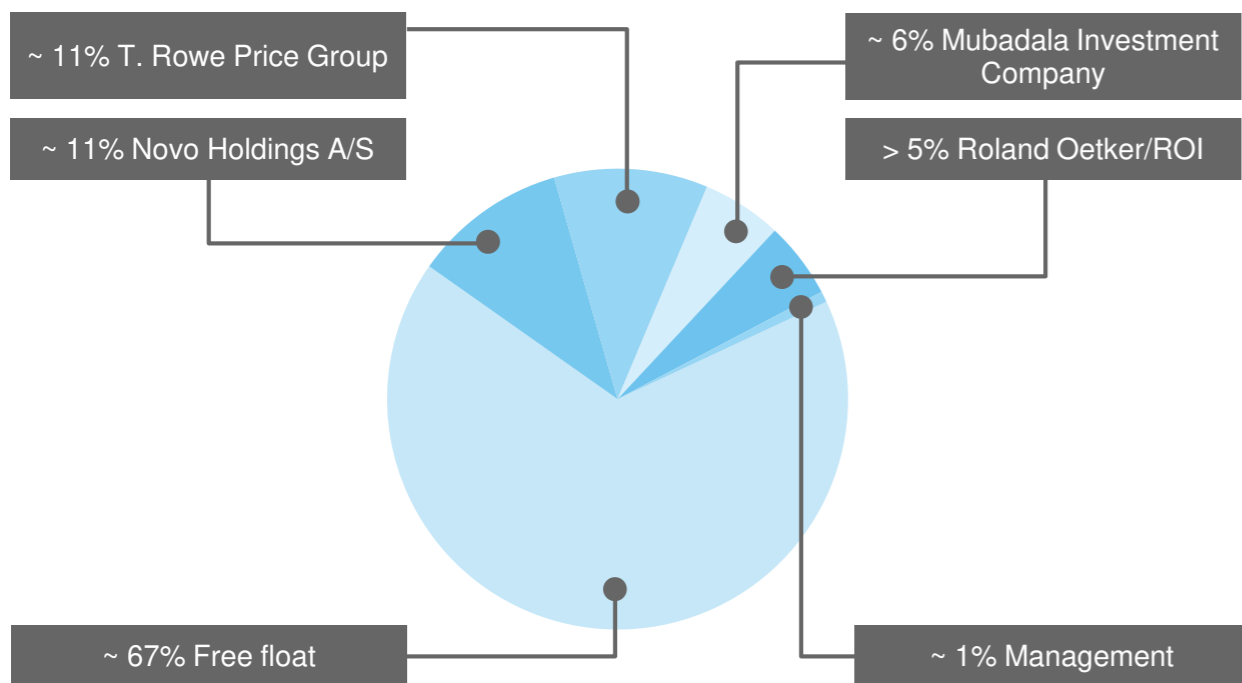
As Evotec...

- we have a direct impact on selected SDGs and actively drive them forward
- Through their connectivity, we contribute indirectly to the whole set of goals.



Strong team and shareholders supporting sustainable growth

Management & shareholder structure¹⁾



Number of shares: 164.6 m

Listing: Frankfurt Stock Exchange (MDAX, TecDAX), OTCBB

52 week high/low: € 43.00/€ 21.31

Management Board

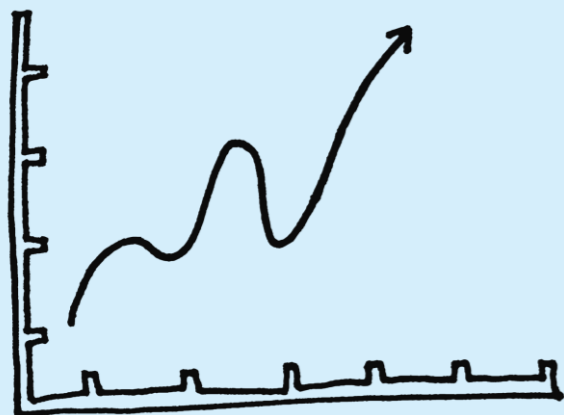
- **Werner Lanthaler (CEO)**
Long-time experience in Pharma & biotech
- **Cord Dohrmann (CSO)**
Long-time experience in drug discovery
- **Craig Johnstone (COO)**
Strong drug discovery and commercial track record
- **Enno Spillner (CFO)**
Long-time experience in finance & biotech

Supervisory Board

- **Wolfgang Plischke**
Ex-Bayer
- **Iris Löw-Friedrich**
UCB
- **Kasim Kutay**
Novo Holdings
- **Mario Polywka**
Ex-Evotec
- **Roland Sackers**
QIAGEN
- **Elaine Sullivan**
Ex-Lilly

Strong year ahead

Guidance 2021



Very good top-line growth expected

- Assumption based on current orders, prospective milestone payments
- Total Group revenues **€ 550-570 m** (€ 565-585 m at constant exchange rates¹⁾⁾)

Strong EBITDA – despite massive investments

- Regardless of COVID-19, increasing expenses of promising R&D projects, ramp-up of Just – Evotec Biologics business, expansion of J.POD[®] 1 capacities in US & J.POD[®] 2 in EU
- Adjusted Group EBITDA²⁾⁾ **€ 105-120 m** (€ 115-130 m at constant exchange rates¹⁾⁾)

Accelerated R&D investments for growth

- Further expand long-term & sustainable pipeline of first-in-class projects & platforms
- Unpartnered Group R&D expenses of **€ 50-60 m³⁾⁾**

¹⁾⁾ \$/€ 2020: 1.15; €/GBP 2020: 1.13

²⁾⁾ Before contingent considerations, income from bargain purchase & excl. impairments on goodwill, other intangible & tangible assets as well as the total non-operating result

³⁾⁾ Evotec focuses its guidance and upcoming reporting on the “unpartnered R&D” part. ID-related R&D expenses will be fully reimbursed by its partner Sanofi (“partnered R&D”).

Strong news flow and strategy update with Action Plan 2025

Newsflow 2021



EVT Execute

- New integrated service alliances in drug discovery & development
- Acceleration of AI/ML partnering across all modalities
- Completion of J.POD[®] 1 in Redmond (US) / Initiation of J.POD[®] 2 EU in Toulouse

EVT Innovate

- Partnerships based on own R&D projects and platforms
- New clinical initiations and progress of co-owned pipeline
- Strategic launch of QRBeta Initiative

EVT Equity & BRIDGES

- Initiation of new BRIDGEs
- New operational ventures

Your contact:

Volker Braun
Global Head of Investor Relations & ESG

+49.(0).40.560 81-775
+49.(0).151 1940 5058 (m)
volker.braun@evotec.com

